

Industrial Food



Sustainable HACCP clothing concepts for the
food, pharmaceutical and cosmetics industry.



www.bp-online.com



BIERBAUM-PROENEN. SINCE 1788.



FOOD



PACKAGING



LABORATORY



COSMETICS



PHARMACEUTICAL

BP RESPONSIBILITY

- 4 An eye on the world.
- 6 MORE commitment to planet fairness.
- 8 MORE than just manufactured.

THE HACCP CONCEPT

- 10 More than an HACCP concept.
Accomplished and diverse, also in terms of colours.
- 12 The HACCP risk classes.
- 14 More quality.
Quality, sizing system and washability.
- 16 BP individualisation service.
Make it your own.

THE BP COLLECTION

- 18 Everything at a glance.
Overview of BP Industrial Food®
- 20 White
Risk classes 1-3 Class 1 Class 2 Class 3
- 28 Light blue
Risk classes 1-3 Class 1 Class 2 Class 3
- 30 Light grey
Risk classes 1-3 Class 1 Class 2 Class 3
- 34 Dark grey
Risk class 1 Class 1
- 38 Mid green
Risk class 1 Class 1
- 42 Royal blue
Risk class 1 Class 1
- 44 BP T-shirts
More colour, more choice.

100 % ORIENTATION

- 48 BP expertise
BP sizes
- 50 BP product finder
All items at a glance
- 51 BP worlds
Huge variety in other BP catalogues



Passion. Since 1788.

Whether in the food, pharmaceutical, cosmetics or packaging industry – strict hygienic standards and HACCP risk classes are the norm.

BP offers work clothing solutions that meet these requirements and that are reliable, day after day. With a feel for details. With high sustainability standards. And with the sheer joy of quality.

We at BP have been investing in this quality since 1788. For people who enjoy their work but whose everyday working lives are also shaped by time pressure and involve physically demanding activities. For these wearers of our work clothing, material, fit, durability and ecological compatibility are particularly crucial.

We invite you to discover for yourself this difference in terms of quality, sustainability, function and design. In short: our professional BP clothing solutions.



This catalogue is valid from 2018 to 2020.
For production reasons, we reserve the right to make changes to individual products.
Printing errors reserved.



An eye on the world.



We create sustainable values for the people who work with us. Economic success equips us for the future. We stand for fair working conditions and use natural resources responsibly.

Basic principle 5 of the BP identity

MORE respect thanks to sustainability.

We at BP believe it is our responsibility to apply the same values to the development and production of our work clothing as we have applied to the running of our company since 1788. One of these values is sustainability.

In order to meet this claim, we expect that everyone at BP, as well as our suppliers and partners, show respect towards others and the environment.

On the next page, by taking BP's own production company VETRA in Tunisia by way of example, we describe how this is implemented at one of our foreign production sites.

We work with a variety of institutions that promote, require and support sustainability. For example, we produce all work clothing solutions worldwide according to the principles of the Fair Wear

Foundation and support the Fairtrade Cotton Program. At the same time, our products are also certified in compliance with Oeko-Tex® Standard 100.

Our Industrial Food collection meets all standards and regulations of the food, pharmaceutical, cosmetics and packaging industries, e.g. HACCP risk classes, DIN 10524 certification and suitability for industrial laundering.

You can rely on BP quality and our commitment to man and nature. To find out more, go to www.bp-online.com.



MORE commitment to planet fairness.

Quality, made by VETRA.

VETRA, the BP production company in Tunisia, was founded in 1995 and now sews our most complex products in small batch sizes. This isn't surprising as 280 highly trained employees work at VETRA, and almost half of them have been there for more than 15 years, which means that they have a lot of expertise for the company.



VETRA stands for flexibility, quality and efficiency. Its expertise in the field of industrial manufacture in particular is excellent. BP employees based in Cologne often travel to Tunisia for training and development. In turn, employees in Domstrasse, Cologne

often provide training for the Tunisian partners, passing on their innovative knowledge.

For man and the environment.

VETRA is StEP-certified and audited on a regular basis by the Fair Wear Foundation (FWF). BP works intensively on improving working conditions at its own factory. In 2017, BP and VETRA

together launched a FWF pilot project called "Living Wage" that is aimed at finding out how remuneration can be improved for factory employees and which other financial possibilities or support can be made available.

"To produce good work, you have to be happy. This is the basis of our quality."

Matthias Berninger, Manager of VETRA, the BP production site in Tunisia.

And he's right, as is confirmed by the work of our BP production company in North Africa.



VETRA.



BP and the Fair Wear Foundation.

Manufacturing good products and standing up for a good cause. Principles that bring people together. All the more so if more than 120 European companies join forces in order to improve working conditions in the textile and clothing industry.

The Fair Wear Foundation (FWF) multi-stakeholder initiative was founded in 1999. In 2010, BP became the first German supplier of professional clothing to join. All members are inspected by the organisation on a regular basis. Not only are they inspected but also the respective production partners. So that BP can be sure that everyone is behind this initiative, the clothing manufacturers also sign the FWF principles. Consequently, everyone pulls together.



Today, we are proud to say that 95% of the BP procurement volume is sourced from audited production partners. And that BP has been awarded the status Fair Wear Leader for the fourth time in succession.

Find out more at www.fairwear.org



Annet Baldus, Sustainability Cologne





MORE than just manufactured.



We are a member of the FAIR WEAR FOUNDATION multi-stakeholder initiative. The aim of the FAIR WEAR FOUNDATION is to improve working conditions for people employed in the international clothing industry. We have now been named Fair Wear Leader four times in succession.

For more information, go to www.fairwear.org



Our product stewardship also means that BP products are harmless in terms of human ecology. That is why all BP products are tested for harmful substances, and most are certified in accordance with Oeko-Tex® Standard 100.



We are a member of the Partnership for Sustainable Textiles. This governmental initiative aims to uphold social, ecological and economical standards throughout the production and supply chain in the clothing industry.

For more information, go to www.textilbuendnis.com



We participate in the Fairtrade Cotton Program. This program enables small-scale farmers to sell more of their cotton as Fairtrade. In 2017, as part of the Fairtrade Cotton Program, we purchased 10% of our cotton under Fairtrade conditions.

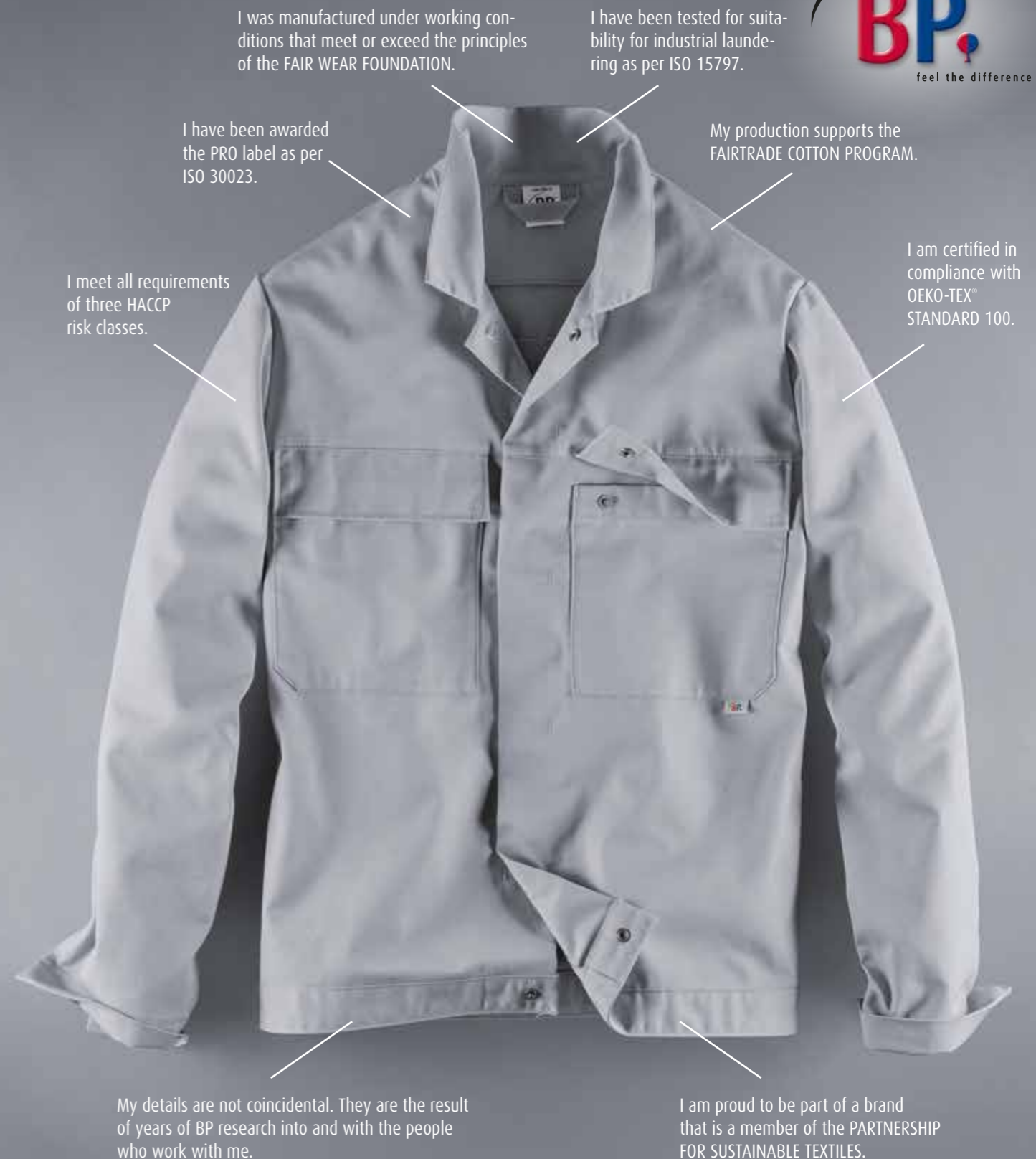
For more information, go to www.info.fairtrade.net/program



In 2017, our Tunisian subsidiary Vetra received SteP certification by Oeko-Tex®. By analysing all relevant company areas, such as chemicals management, environmental management, occupational health and safety, social responsibility and quality management, SteP certification provides a comprehensive and reliable indicator of a production company's approach to sustainable management.



Some suppliers are bluesign® system suppliers. This label eliminates harmful substances right from the beginning of the manufacturing process, and sets and controls standards for an environmentally friendly and safe production.



I was manufactured under working conditions that meet or exceed the principles of the FAIR WEAR FOUNDATION.

I have been tested for suitability for industrial laundering as per ISO 15797.

I have been awarded the PRO label as per ISO 30023.

My production supports the FAIRTRADE COTTON PROGRAM.

I meet all requirements of three HACCP risk classes.

I am certified in compliance with OEKO-TEX® STANDARD 100.

My details are not coincidental. They are the result of years of BP research into and with the people who work with me.

I am proud to be part of a brand that is a member of the PARTNERSHIP FOR SUSTAINABLE TEXTILES.

... with passion and expertise.

MORE than an HACCP concept.

MORE for industry. MORE for people.

BP work clothing satisfies many wishes for a well thought-out and sustainable, high-quality work clothing solution.

From the fulfilment of all standards of the individual HACCP risk classes, an interesting range of colours, very good industrial washability, and lots of individualisation and finishing possibilities

to a sizing system that fits everyone, BP Industrial Food[®] is ideally tailored to the everyday requirements of the food, pharmaceutical, cosmetics and packaging industry.

HACCP: Hazard Analysis Critical Control Point Developed for NASA.

It was NASA that contributed significantly to the development of the HACCP concept in order to develop food for astronauts that was produced and packaged 100% hygienically and was suitable for consumption in space. As early as 1971, the HACCP concept had become established in the free economy and is today an important and legal basis for manufacture and sale in hygienically sensitive areas. Of course workwear for employees in these manufacturing areas is an important link in the chain of HACCP measures.



The HACCP risk classes.

HACCP stands for Hazard Analysis Critical Control Point. Since 2006, only food that meets HACCP guidelines may be traded in or imported into the European Union.

HACCP examines and documents food processing. In this way, errors that lead to a hygiene risk can be identified and prevented. The resulting requirements of work clothing, its reconditioning and storage are regulated in DIN 10524. As a hygiene clothing solution that is certified for risk classes 1-3 in compliance with the latest standard (2012) DIN 10524, BP Industrial Food® is an elementary part of your individual HACCP concept. It meets the requirements specified in the standard for design, function and fabric. For reconditioning in the washing process, the collection was tested for its washing properties in accordance with ISO 15797.

Available in six attractive colours, BP Industrial Food® enables you to implement your individual corporate colour scheme in the HACCP production process in accordance with the relevant standards.

BP has developed a clothing concept for people working in the food industry featuring maximum utility, comfort and expertise in achieving a good unisex fit.



MORE safety for the food industry.



	21 page 20-27	11 page 28-29	51 page 30-33	53 page 34-37	74 page 38-41	13 page 42-43
1 Class 1: provision of a low level of safety and protection Low hygiene risk: non-perishable foodstuffs or ingredients. The product is further processed or washed by the manufacturer or consumer. Clothing generally has to be changed once per week and, if dirty, may have to be changed more frequently. Use in the pharmaceuticals, cosmetics or food industries, e.g. fruit, vegetables, fresh fish, flour (ground), herbs, spices, packaged frozen food, pasta, jars, tins.	✓	✓	✓	✓	✓	✓
2 Class 2: provision of a high level of safety and protection High hygiene risk: unpacked perishable foodstuffs or ingredients. Particularly if food is not processed further and microorganisms could multiply in or on the food. Clothing generally has to be changed daily and, if dirty, may have to be changed more frequently. Use in the pharmaceuticals, cosmetics or food industries, e.g. unpacked foodstuffs, cold meats, cheese, salads, cakes, soft drinks, alcoholic drinks, sweets, salting/smoking, fermenting, conserving.	✓	✓	✓			
3 Class 3: provision of a very high level of safety and protection Highest hygiene risk: unpacked, ready-to-eat, easily perishable foodstuffs (that will not be heated further). Clothing has to be changed daily and, if dirty, may have to be changed more frequently. Use in the pharmaceuticals, cosmetics or food industries, e.g. fish, steak tartar, prepared salads, refrigerated ready meals, ice-cream, dairy products.	✓	✓	✓			





MORE quality is what we aim for.

We make clothing for people who identify with their work and who give their best every day.

BP offers work clothing solutions to suit every situation. Solutions that also meet the requirements of the food, pharmaceutical, cosmetics and packaging industry.

These include high wear resistance, colourfastness, a comfortable fit, compliance with the various HACCP classes and practical details, such as metal buttons that, in the unlikely event of getting lost, can be easily detected with an X-ray and thus offer great safety. This is all the result of many years of development work, lots of one-to-one discussions with our customers, expertise and a great deal of creativity.

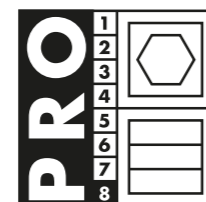
Our own quality laboratory in Cologne ensures a consistently high standard in everything that is important to our wearers of work clothing.



Industrial washability is also a key point: our collections have been awarded the PRO label as an important prerequisite for reconditioning work clothing in the washing process in accordance with the relevant standards.

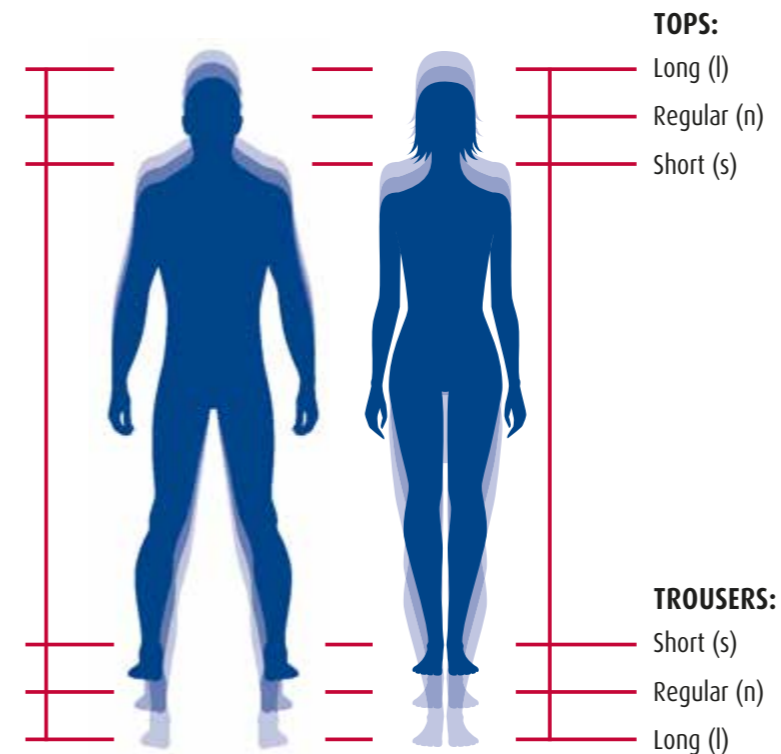
It indicates that the product meets the requirements of ISO 30023. In addition, it has been tested for suitability for industrial laundering in accordance with ISO 15797, namely using washing programmes (1-8), in the tunnel finisher and/or tumble dryer.

For further information about the PRO label, please refer to page 50.



For hygienic reconditioning of work clothing in the washing process as per DIN EN 14065 and/or RAL-GZ 992/3:

- ✓ Tested for suitability for industrial laundering as per ISO 15797
- ✓ Awarded the PRO label as per ISO 30023



There's no such thing as it doesn't fit: three lengths for sleeves, back and legs.

All items in this collection are suitable for both men and women and are based on an intelligent sizing system in three lengths: **s (short), n (regular) and l (long).**

With these three different sleeve, back and trouser lengths, every item of clothing can be adapted to the individual body shape.

The result: BP comfort that makes you feel good!

3 lengths: the right size for everyone!



Make it your own.



DIRECT EMBROIDERY

Very hard-wearing and particularly distinguished-looking. Our quality yarns are as indifferent to frequent washing as they are to the stresses of everyday wear. Lots of colours and font types are possible.



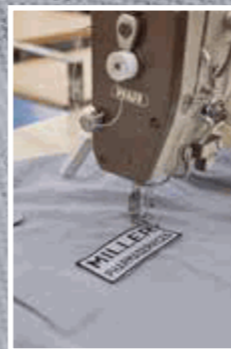
TRANSFER PRINT

This is robust individualisation using a film transfer print for printing your logo, name or motif on almost any fabric. Here, too, we offer a large range of colours, sizes and forms.



EMBROIDERED EMBLEM

Your logo, company or personal name can be sewn onto the fabric.



The BP customisation service for greater personality.

Names, logos, lettering or simple motifs – with BP, you can individualise your clothing in compliance with standard DIN 10524. In HACCP clothing, labelling must be permanently attached and its function, appearance and colour resistance must not change throughout the intended lifetime of the clothing.

The advantage of individualisation: it highlights the team's sense of togetherness and also, of course, the personality of the individual.

Clothing can also communicate the corporate design of a laboratory or a company in the food, packaging and cosmetics industry. Lots of colours are possible.

Our options, namely direct embroidery, embroidered emblem or transfer print, are always tailored to the respective product. All individualisation materials used by BP are of outstanding quality and are suitable for **industrial laundering as per ISO 15797**.

Risk classes 1-3

Risk class 1



1670
BP® Unisex jacket



1670 500 21

1682 BP® Unisex
work jacket **with versatile
pocket solutions**



1682 558 21

1673
BP® Unisex coat



1673 500 21

1672
BP® Unisex trousers



1672 558 21



1670 500 11



1673 500 11



1672 558 11



1670 500 51



1682 558 51



1673 500 51



1672 558 51



1682 558 53



1673 500 53



1670 500 74



1682 558 74



1673 500 74



1682 558 13



1673 500 13

1680 BP® Unisex work
trousers **with
versatile pocket solutions**



1680 558 21

1675 BP® Unisex
bib & brace



1675 558 21

1681 BP® Unisex work
bib & brace **with
versatile pocket solutions**



1681 558 21

1676
BP® Unisex coverall



1676 558 21



1680 558 51



1675 558 51



1681 558 51



1676 558 51



1680 558 53



1681 558 53



1680 558 74



1681 558 74



1680 558 13



1681 558 13

White
Page 20-27

Light blue
Page 28-29

Light grey
Page 30-33

Dark grey
Page 34-37

Mid green
Page 38-41

Royal blue
Page 42-43





BP® Unisex coat
1673 500 21
BP® Unisex trousers
1672 558 21

BP® Unisex jacket
1670 500 21
BP® Unisex trousers
1672 558 21

The perfect complement: our BP T-shirts match all BP Industrial Food® outfits. Pages 44-47.

White

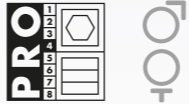
The colour white meets the requirements of **DIN 10524:2012** risk classes 1-3.

Latest DIN standard

Class	1	✓
Class	2	✓
Class	3	✓

Particularly suitable for application areas with a **medium to high hygiene risk in the food industry.**

Suitable for industrial laundering as per ISO 15797



BP® Unisex jacket 1670

Long sleeves with adjustable press-stud fastening, turn-down collar, concealed press-stud band, 1 inside breast pocket, 2 inside side pockets

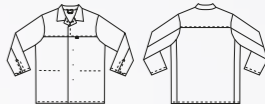
Sizes XSs-XLs, XSn-4XLn, SI-3XLI

65% polyester/35% cotton, approx. 210 g/m²



1670 500 21 White

- ✓ concealed press-stud band
- ✓ 3 inside pockets
- ✓ sleeves with adjustable press-stud fastening



BP® Unisex work jacket 1682

Long sleeves with adjustable press-stud fastening cuffs, turn-down collar, concealed press-stud band, 2 breast pockets with flap fastening, 1 inside pocket, back yoke, movement pleats in back

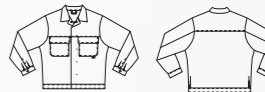
Sizes XSn-3XLn, SI-2XLI

65% polyester/35% cotton, approx. 245 g/m²



1682 558 21 White

- ✓ breast pockets with flap fastening
- ✓ concealed press-stud band
- ✓ sleeves with adjustable press-stud fastening cuffs



Class 1
Class 2
Class 3

Available in the following colours:

BP® Unisex
work jacket
1682 558 21
BP® Unisex
work trousers
1680 558 21



BP® Unisex jacket
1670 500 21
BP® Unisex trousers
1672 558 21

Feel like a change? The BP Industrial Food® collection for risk class 1 is available in six different colours.

White

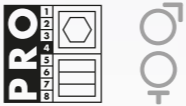
The colour white meets
the requirements of
DIN 10524:2012
risk classes 1-3.

Latest DIN
standard

Class	1	✓
Class	2	✓
Class	3	✓

Particularly suitable for application
areas with a **medium to high**
hygiene risk in the food industry.

Suitable for industrial laundering as per ISO 15797



BP® Unisex trousers 1672

Elasticated adjustable waistband for optimum fit,
1 fastening inside side pocket, yoke

Sizes XSs-XLs, XSn-4XLn, SI-3XLI

65% polyester/35% cotton, approx. 245 g/m²



1080 001 21 White

BP® Belt 1080, pack of 3

Belt made of elastic webbing,
polyamide 6.6 buckle,
width 4 cm

Size 001 = 110 cm,
Size 002 = 130 cm

100% polyester
Suitable for industrial laundering
as per ISO 15797

BP® Unisex work trousers 1680

Zip, elasticated adjustable waistband for optimum fit,
2 side pockets, 1 ruler, 1 thigh and 1 back pocket with
flap fastening

Sizes XSs-XLs, XSn-3XLn, SI-2XLI

65% polyester/35% cotton, approx. 245 g/m²



1672 558 21 White



- ✓ fastening inside side pocket
- ✓ elasticated adjustable waistband for optimum fit
- ✓ with incorporated yoke for a better fit



1680 558 21 White

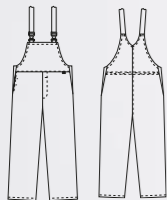
- ✓ versatile pocket solutions incl. ruler pocket
- ✓ elasticated adjustable waistband for optimum fit
- ✓ back pocket with flap fastening





1675 558 21 White

- ✓ inside bip pocket
- ✓ inside side pocket
- ✓ elasticated adjustable waistband for optimum fit



BP® Unisex bib & brace 1675

Elasticated adjustable waist for optimum fit, 1 inside bib pocket, 1 fastening inside side pocket, knitted side inserts for greater movement, elasticated braces

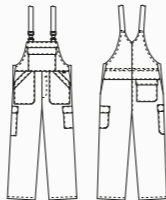
Sizes XSs-XLs, XSn-4XLn, SI-3XLI

65% polyester/35% cotton, approx. 245 g/m²



1681 558 21 White

- ✓ versatile pocket solutions incl. ruler pocket
- ✓ elasticated adjustable waistband for optimum fit
- ✓ knitted side inserts for greater freedom of movement



BP® Unisex work bib & brace 1681

Elasticated adjustable waist for optimum fit, 2 side pockets, 1 ruler, 1 thigh and 1 back pocket with flap fastening, 1 bib pocket with flap fastening, knitted side inserts for greater movement

Sizes XSs-XLs, XSn-4XLn, SI-3XLI

65% polyester/35% cotton, approx. 245 g/m²



White

The colour white meets the requirements of **DIN 10524:2012** risk classes 1-3.

Latest DIN standard

Class	1	✓
Class	2	✓
Class	3	✓

Particularly suitable for application areas with a **medium to high hygiene risk in the food industry.**

Suitable for industrial laundering as per ISO 15797

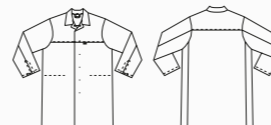


apart from bib & brace
1675, 1681

- ✓ concealed press-stud band
- ✓ 3 inside pockets
- ✓ sleeves with adjustable press-stud fastening



1673 500 21 White



BP® Unisex coat 1673

Long sleeves with adjustable press-stud fastening, turn-down collar, concealed press-stud band, 1 inside breast pocket, 2 inside side pockets

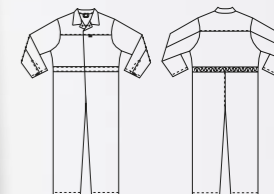
Sizes XSs-XLs, XSn-4XLn, SI-3XLI

65% polyester/35% cotton, approx. 210 g/m²



1676 558 21 White

- ✓ elasticated adjustable waistband for optimum fit
- ✓ fastening inside breast pocket
- ✓ sleeves with adjustable press-stud fastening



BP® Unisex coverall 1676

Long sleeves with adjustable press-stud fastening, turn-down collar, concealed press-stud band, 1 inside breast pocket, 2 inside side pockets

Sizes XSs-XLs, XSn-4XLn, SI-3XLI

65% polyester/35% cotton, approx. 245 g/m²



Class 1
Class 2
Class 3

Available in the following colours:

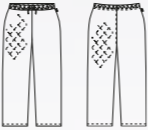


Perfect unisex fit: discover our items in three lengths. Page 15.

BP® Unisex quilted jacket
1684 665 21
BP® Unisex work
bib & brace
1681 558 21

BP® Unisex
coverall
1676 558 21

- ✓ based on hygiene requirements in accordance with DIN 10524
- ✓ for wearing over and under clothing
- ✓ elasticated waist with integrated drawstring for optimum fit



1685 665 21 White

BP® Unisex quilted trousers 1685
Elasticated waist with integrated drawstring, quilted fabric (high-frequency heat-sealed)

Sizes XSn-3XLn
Outer fabric: 67% polyester/33% cotton
Lining: 100% polyester
Inside fabric: 50% cotton/50% polyester
approx. 500 g/m²

60 △ □ ⊗ ⊗

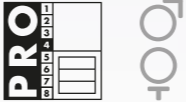
White

These items are based on the standard **DIN 10524:2012** **Latest DIN standard** risk classes 1-3.

Class	1	✓
Class	2	✓
Class	3	✓

Particularly suitable for application areas with a **medium to high hygiene risk in the food industry.**

Suitable for industrial laundering as per ISO 15797



BP® Unisex quilted jacket 1684
Long sleeves with inside cuffs, V-neck, concealed press-stud fastening, quilted fabric (high-frequency heat-sealed)

Sizes XSn-3XLn
Outer fabric: 67% polyester/33% cotton
Lining: 100% polyester
Inside fabric: 50% cotton/50% polyester
approx. 500 g/m²

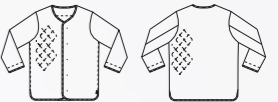
60 △ □ ⊗ ⊗

- ✓ thermal protection against temperatures down to -15°C
- ✓ high-frequency heat-sealed thermal fabric
- ✓ thermal isolation as per NFG 07-107



1684 665 21 White

- ✓ based on hygiene requirements in accordance with DIN 10524
- ✓ for wearing over and under clothing
- ✓ concealed press-stud fastening
- ✓ inside cuffs for better wear comfort



1683 665 21 White

- ✓ based on hygiene requirements in accordance with DIN 10524
- ✓ for wearing over and under clothing
- ✓ concealed press-stud fastening



Make it your own: you'll find information about the BP individualisation service on pages 16/17.



BP® Unisex coat
1673 500 11
BP® Unisex trousers
1672 558 11

BP® Unisex
jacket
1670 500 11
BP® Unisex
trousers
1672 558 11

- ✓ fastening inside side pocket
- ✓ elasticated adjustable waist-band for optimum fit
- ✓ with incorporated yoke for a better fit



1672 558 11 Light blue

BP® Unisex trousers 1672

Elasticated adjustable waistband for optimum fit, 1 fastening inside side pocket, yoke

Sizes Ss-XLs, XSn-3XLn, Sl-2XLI

65% polyester/35% cotton, approx. 245 g/m²



Light blue

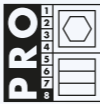
The colour light blue meets the requirements of **DIN 10524:2012** risk classes 1-3.

Latest DIN standard

Class	1	✓
Class	2	✓
Class	3	✓

Particularly suitable for application areas with a **medium to high hygiene risk in the pharmaceuticals industry.**

Suitable for industrial laundering as per ISO 15797



BP® Unisex jacket 1670

Long sleeves with adjustable press-stud fastening, turn-down collar, concealed press-stud band, 1 inside breast pocket, 2 inside side pockets

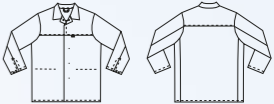
Sizes Ss-XLs, XSn-3XLn, Sl-2XLI

65% polyester/35% cotton, approx. 210 g/m²



1670 500 11 Light blue

- ✓ concealed press-stud band
- ✓ 3 inside pockets
- ✓ sleeves with adjustable press-stud fastening



BP® Unisex coat 1673

Long sleeves with adjustable press-stud fastening, turn-down collar, concealed press-stud band, 1 inside breast pocket, 2 inside side pockets

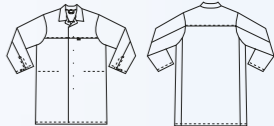
Sizes Ss-XLs, XSn-3XLn, Sl-2XLI

65% polyester/35% cotton, approx. 210 g/m²



1673 500 11 Light blue

- ✓ concealed press-stud band
- ✓ 3 inside pockets
- ✓ sleeves with adjustable press-stud fastening



The perfect complement: our BP T-shirts match all BP Industrial Food® outfits. Pages 44-47.



BP® Belt 1080, pack of 3
Belt made of elastic webbing, polyamide 6.6 buckle, width 4 cm
Size 001 = 110 cm,
Size 002 = 130 cm
100% polyester
Suitable for industrial laundering as per ISO 15797

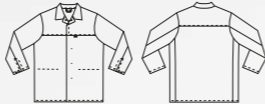
1080 001 21 White

BP® Unisex jacket 1670
Long sleeves with adjustable press-stud fastening, turn-down collar, concealed press-stud band, 1 inside breast pocket, 2 inside side pockets
Sizes Ss-XLs, XSn-3XLn, SI-2XLI
65% polyester/35% cotton, approx. 210 g/m²



1670 500 51 Light grey

- ✓ concealed press-stud band
- ✓ 3 inside pockets
- ✓ sleeves with adjustable press-stud fastening

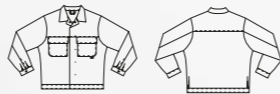


BP® Unisex work jacket 1682
Long sleeves with adjustable press-stud fastening cuffs, turn-down collar, concealed press-stud band, 2 breast pockets with flap fastening, 1 inside pocket, back yoke, movement pleats in back
Sizes XSn-3XLn, SI-2XLI
65% polyester/35% cotton, approx. 245 g/m²



1682 558 51 Light grey

- ✓ breast pockets with flap fastening
- ✓ concealed press-stud band
- ✓ sleeves with adjustable press-stud fastening cuffs



Light grey

The colour light grey meets the requirements of **DIN 10524:2012** **Latest DIN standard** risk classes 1-3.

Class	1	✓
Class	2	✓
Class	3	✓

Particularly suitable for application areas with a **medium to high hygiene risk in the pharmaceutical and food industries.**

Suitable for industrial laundering as per ISO 15797



BP® Unisex trousers 1672
Elasticated adjustable waistband for optimum fit, 1 fastening inside side pocket, yoke
Sizes Ss-XLs, XSn-3XLn, SI-2XLI
65% polyester/35% cotton, approx. 245 g/m²



1672 558 51 Light grey

- ✓ fastening inside side pocket
- ✓ elasticated adjustable waistband for optimum fit
- ✓ with incorporated yoke for a better fit



BP® Unisex work trousers 1680
Zip, elasticated adjustable waistband for optimum fit, 2 side pockets, 1 ruler, 1 thigh and 1 back pocket with flap fastening
Sizes Ss-XLs, XSn-3XLn, SI-2XLI
65% polyester/35% cotton, approx. 245 g/m²



1680 558 51 Light grey

- ✓ versatile pocket solutions incl. ruler pocket
- ✓ elasticated adjustable waistband for optimum fit
- ✓ back pocket with flap fastening



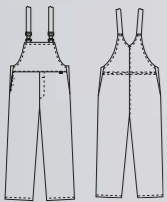
Available in the following colours:

Aware of our responsibility: you'll find an overview of BP's commitment to sustainability on pages 4-9.



1675 558 51 Light grey

- ✓ inside bib pocket
- ✓ inside side pocket
- ✓ elasticated adjustable waistband for optimum fit



BP® Unisex bib & brace 1675

Elasticated adjustable waist for optimum fit, 1 inside bib pocket, 1 fastening inside side pocket, knitted side inserts for greater movement, elasticated braces

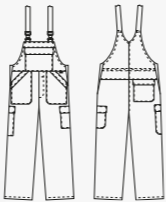
Sizes Ss-XLs, XSn-3XLn, SI-2XLI

65% polyester/35% cotton, approx. 245 g/m²



1681 558 51 Light grey

- ✓ versatile pocket solutions incl. ruler pocket
- ✓ elasticated adjustable waistband for optimum fit
- ✓ knitted side inserts for greater freedom of movement



BP® Unisex work bib & brace 1681

Elasticated adjustable waist for optimum fit, 2 side pockets, 1 ruler, 1 thigh and 1 back pocket with flap fastening, 1 bib pocket with flap fastening, knitted side inserts for greater movement

Sizes Ss-XLs, XSn-3XLn, SI-2XLI

65% polyester/35% cotton, approx. 245 g/m²



Light grey

The colour light grey meets the requirements of **DIN 10524:2012** risk classes 1-3.

Latest DIN standard

Class	1	✓
Class	2	✓
Class	3	✓

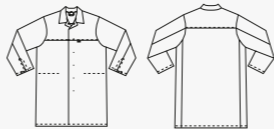
Particularly suitable for application areas with a **medium to high hygiene risk in the pharmaceutical and food industries.**

Suitable for industrial laundering as per ISO 15797



1673 500 51 Light grey

- ✓ concealed press-stud band
- ✓ 3 inside pockets
- ✓ sleeves with adjustable press-stud fastening



BP® Unisex coat 1673

Long sleeves with adjustable press-stud fastening, turn-down collar, concealed press-stud band, 1 inside breast pocket, 2 inside side pockets

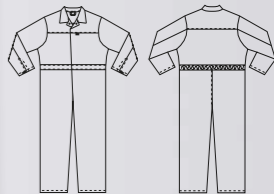
Sizes Ss-XLs, XSn-3XLn, SI-3XLI

65% polyester/35% cotton, approx. 210 g/m²



1676 558 51 Light grey

- ✓ elasticated adjustable waistband for optimum fit
- ✓ fastening inside breast pocket
- ✓ sleeves with adjustable press-stud fastening



BP® Unisex coverall 1676

Long sleeves with adjustable press-stud fastening, turn-down collar, concealed press-stud band, 1 inside breast pocket, 2 inside side pockets

Sizes Ss-XLs, XSn-3XLn, SI-2XLI

65% polyester/35% cotton, approx. 245 g/m²



Available in the following colours:

Perfect unisex fit: discover our items in three lengths. Page 15.



BP® Unisex coat
1673 500 53
BP® Unisex
work trousers
1680 558 53

BP® Unisex
work jacket
1682 558 53
BP® Unisex
work trousers
1680 558 53

Feel like a change? The BP Industrial Food® collection for risk class 1 is available in six different colours.

Dark grey

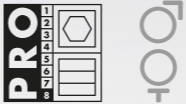
The colour dark grey
meets the requirements of
DIN 10524:2012
risk class 1.

Latest DIN
standard

Class	1	✓
Class	2	-
Class	3	-

Particularly suitable for application areas
with a **low hygiene risk and/or as
CI clothing, e.g. for maintenance per-
sonnel and suppliers.**

Suitable for industrial laundering as per ISO 15797



BP® Unisex work jacket 1682

Long sleeves with adjustable press-stud
fastening cuffs, turn-down collar, concealed
press-stud band, 2 breast pockets with flap
fastening, 1 inside pocket, back yoke, move-
ment pleats in back

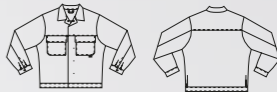
Sizes XSn-3XLn, SI-2XLI

65% polyester/35% cotton, approx. 245 g/m²



1682 558 53 Dark grey

- ✓ breast pockets
with flap fastening
- ✓ concealed press-stud band
- ✓ sleeves with adjustable press-stud
fastening cuffs



BP® Unisex coat 1673

Long sleeves with adjustable press-stud
fastening, turn-down collar, concealed press-
stud band, 1 inside breast pocket, 2 inside side
pockets

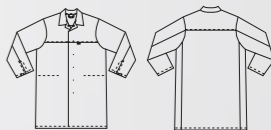
Sizes Ss-XLs, XSn-3XLn, SI-2XLI

65% polyester/35% cotton, approx. 210 g/m²



1673 500 53 Dark grey

- ✓ concealed press-stud band
- ✓ 3 inside pockets
- ✓ sleeves with adjustable
press-stud fastening



Class 1

Available in the following colours:

BP® Unisex
work jacket
1682 558 53
BP® Unisex work
bib & brace
1681 558 53



Aware of our responsibility: you'll find an overview of BP's commitment to sustainability on pages 4-9.

Dark grey

The colour dark grey
meets the requirements of
DIN 10524:2012
risk class 1.

Latest DIN
standard

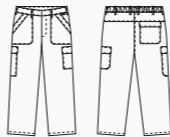
Class	1	✓
Class	2	-
Class	3	-

Particularly suitable for application areas
with a **low hygiene risk and/or as
CI clothing, e.g. for maintenance per-
sonnel and suppliers.**

Suitable for industrial laundering as per ISO 15797



- ✓ versatile pocket solutions
incl. ruler pocket
- ✓ elasticated adjustable
waistband for optimum fit
- ✓ back pocket with flap
fastening



1680 558 53 Dark grey

BP® Unisex work trousers 1680

Zip, elasticated adjustable waistband for optimum fit,
2 side pockets, 1 ruler, 1 thigh and 1 back pocket with
flap fastening

Sizes Ss-XLs, XSn-3XLn, SI-2XLI

65% polyester/35% cotton, approx. 245 g/m²



feel the difference



1681 558 53 Dark grey

BP® Unisex work bib & brace 1681

Elasticated adjustable waist for optimum fit, 2 side pockets,
1 ruler, 1 thigh and 1 back pocket with flap fastening,
1 bib pocket with flap fastening, knitted side inserts for
greater movement

Sizes Ss-XLs, XSn-3XLn, SI-2XLI

65% polyester/35% cotton, approx. 245 g/m²



BP® Unisex work
bib & brace
1681 558 74

BP® Unisex
work jacket
1682 558 74
BP® Unisex
work trousers
1680 558 74

The perfect complement: our BP T-shirts match all BP Industrial Food® outfits. Pages 44-47.

Mid green

The colour mid green
meets the requirements of
DIN 10524:2012
risk class 1.

Latest DIN
standard

Class	1	✓
Class	2	-
Class	3	-

Particularly suitable for application areas
with a **low hygiene risk and/or as
CI clothing, e.g. for maintenance
personnel and suppliers.**

Suitable for industrial laundering as per ISO 15797



BP® Unisex jacket 1670

Long sleeves with adjustable press-stud
fastening, turn-down collar, concealed press-
stud band, 1 inside breast pocket, 2 inside
side pockets

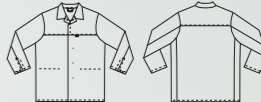
Sizes Ss-XLs, XSn-3XLn, Sl-2XLl

65% polyester/35% cotton, approx. 210 g/m²



1670 500 74 Mid green

- ✓ concealed press-stud band
- ✓ 3 inside pockets
- ✓ sleeves with adjustable
press-stud fastening



BP® Unisex work jacket 1682

Long sleeves with adjustable press-stud
fastening cuffs, turn-down collar, concealed
press-stud band, 2 breast pockets with flap
fastening, 1 inside pocket, back yoke, move-
ment pleats in back

Sizes XSn-3XLn, Sl-2XLl

65% polyester/35% cotton, approx. 245 g/m²



1682 558 74 Mid green

- ✓ breast pockets with flap
fastening
- ✓ concealed press-stud band
- ✓ sleeves with adjustable press-
stud fastening cuffs



feel the difference

Class

Available in the following colours:



1080 001 21 White

BP® Belt 1080, pack of 3

Belt made of elastic webbing, polyamide 6.6 buckle, width 4 cm

**Size 001 = 110 cm,
Size 002 = 130 cm**

100% polyester
Suitable for industrial laundering as per ISO 15797



1673 500 74 Mid green

BP® Unisex coat 1673

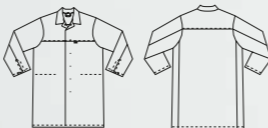
Long sleeves with adjustable press-stud fastening, turn-down collar, concealed press-stud band, 1 inside breast pocket, 2 inside side pockets

Sizes Ss-XLs, XSn-3XLn, Sl-2XLI

65% polyester/35% cotton, approx. 210 g/m²



- ✓ concealed press-stud band
- ✓ 3 inside pockets
- ✓ sleeves with adjustable press-stud fastening



Mid green

The colour mid green meets the requirements of **DIN 10524:2012** risk class 1.

Latest DIN standard

Class	1	✓
Class	2	-
Class	3	-

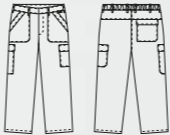
Particularly suitable for application areas with a **low hygiene risk and/or as CI clothing**, e.g. for maintenance personnel and suppliers.

Suitable for industrial laundering as per ISO 15797



1680 558 74 Mid green

- ✓ versatile pocket solutions incl. ruler pocket
- ✓ elasticated adjustable waistband for optimum fit
- ✓ back pocket with flap fastening



BP® Unisex work trousers 1680

Zip, elasticated adjustable waistband for optimum fit, 2 side pockets, 1 ruler, 1 thigh and 1 back pocket with flap fastening

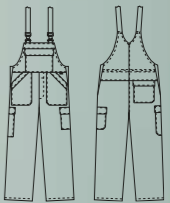
Sizes Ss-XLs, XSn-3XLn, Sl-2XLI

65% polyester/35% cotton, approx. 245 g/m²



1681 558 74 Mid green

- ✓ versatile pocket solutions incl. ruler pocket
- ✓ elasticated adjustable waistband for optimum fit
- ✓ knitted side inserts for greater freedom of movement



BP® Unisex work bib & brace 1681

Elasticated adjustable waist for optimum fit, 2 side pockets, 1 ruler, 1 thigh and 1 back pocket with flap fastening, 1 bib pocket with flap fastening, knitted side inserts for greater movement

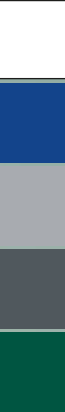
Sizes Ss-XLs, XSn-3XLn, Sl-2XLI

65% polyester/35% cotton, approx. 245 g/m²



Class 1

Available in the following colours:



Make it your own: you'll find information about the BP individualisation service on pages 16/17.

BP® Unisex work jacket 1682

Long sleeves with adjustable press-stud fastening cuffs, turn-down collar, concealed press-stud band, 2 breast pockets with flap fastening, 1 inside pocket, back yoke, movement pleats in back

Sizes XSn-3XLn, SI-2XLI

65% polyester/35% cotton, approx. 245 g/m²



1682 558 13 Royal blue

- ✓ breast pockets with flap fastening
- ✓ concealed press-stud band
- ✓ sleeves with adjustable press-stud fastening cuffs



BP® Unisex coat 1673

Long sleeves with adjustable press-stud fastening, turn-down collar, concealed press-stud band, 1 inside breast pocket, 2 inside side pockets

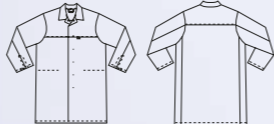
Sizes Ss-XLs, XSn-3XLn, SI-2XLI

65% polyester/35% cotton, approx. 210 g/m²



1673 500 13 Royal blue

- ✓ concealed press-stud band
- ✓ 3 inside pockets
- ✓ sleeves with adjustable press-stud fastening



Royal blue

The colour royal blue meets the requirements of **DIN 10524:2012** risk class 1.

Latest DIN standard

Class	1	✓
Class	2	-
Class	3	-

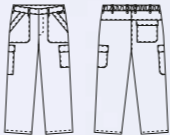
Particularly suitable for application areas with a **low hygiene risk and/or as CI clothing**, e.g. for maintenance personnel and suppliers.

Suitable for industrial laundering as per ISO 15797



1680 558 13 Royal blue

- ✓ versatile pocket solutions incl. ruler pocket
- ✓ elasticated adjustable waistband for optimum fit
- ✓ back pocket with flap fastening



BP® Unisex work trousers 1680

Zip, elasticated adjustable waistband for optimum fit, 2 side pockets, 1 ruler, 1 thigh and 1 back pocket with flap fastening

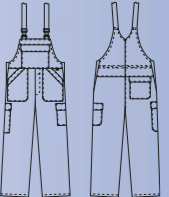
Sizes Ss-XLs, XSn-3XLn, SI-2XLI

65% polyester/35% cotton, approx. 245 g/m²



1681 558 13 Royal blue

- ✓ versatile pocket solutions incl. ruler pocket
- ✓ elasticated adjustable waistband for optimum fit
- ✓ knitted side inserts for greater freedom of movement



BP® Unisex work bib & brace 1681

Elasticated adjustable waist for optimum fit, 2 side pockets, 1 ruler, 1 thigh and 1 back pocket with flap fastening, 1 bib pocket with flap fastening, knitted side inserts for greater movement

Sizes Ss-XLs, XSn-3XLn, SI-2XLI

65% polyester/35% cotton, approx. 245 g/m²



Class 1

Available in the following colours:



Perfect unisex fit: discover our items in three lengths. Page 15.

BP T-SHIRTS

SUITABLE FOR INDUSTRIAL
LAUNDERING AS PER ISO 15797

BP® Unisex T-shirt 1618
1/2 sleeves, V-neck, reinforced shoulders, length 70 cm
Order no. **1618 171 21** White

Sizes XS-4XL

50% cotton/50% polyester, approx. 180 g/m²

✓ based on hygiene requirements in accordance with DIN 10524





BP® Long-sleeve unisex polo shirt 1628
Long sleeves, polo collar with concealed press-stud band, reinforced shoulders, knitted cuffs, length 70 cm
Order no. **1628 181 21** White

Sizes XS-4XL

50% cotton/50% polyester, approx. 220 g/m²

✓ based on hygiene requirements in accordance with DIN 10524

✓ with metal press studs - easy to find with metal detectors





- BP® Unisex T-shirt 1621**
1/2 sleeves, round neck, reinforced shoulders, length 70 cm
- | | |
|--|-----------------|
| Order no. 1621 171 21 White | (sizes XXS-8XL) |
| Order no. 1621 171 13 Royal blue | (sizes XS-6XL) |
| Order no. 1621 171 32 Black | (sizes XS-6XL) |
| Order no. 1621 171 51 Light grey | (sizes XS-6XL) |
| Order no. 1621 171 53 Dark grey | (sizes XS-6XL) |
| Order no. 1621 171 56 Anthracite | (sizes XS-3XL) |
| Order no. 1621 171 74 Mid green | (sizes XS-6XL) |
| Order no. 1621 171 81 Red | (sizes XS-6XL) |
| Order no. 1621 171 82 Claret | (sizes XS-6XL) |
| Order no. 1621 171 85 Orange | (sizes XS-6XL) |
| Order no. 1621 171 110 Night blue | (sizes XS-6XL) |

50% cotton/50% polyester, approx. 180 g/m²

95° △ □ ■ P



✓ based on hygiene requirements in accordance with DIN 10524



- 82 Claret
- 81 Red
- 85 Orange
- 74 Mid green
- 13 Royal blue
- 110 Night blue
- 21 White
- 51 Light grey
- 53 Dark grey
- 56 Anthracite
- 32 Black



BP T-SHIRTS



✓ based on hygiene requirements in accordance with DIN 10524

51 Light grey
21 White
110 Night blue



BP® Long-sleeve unisex T-shirt 1620

Long sleeves, round neck, reinforced shoulders, knitted cuffs, length 70 cm

Order no. **1620 171 21** White
Order no. **1620 171 51** Light grey
Order no. **1620 171 110** Night blue

Sizes XS-4XL

50% cotton/50% polyester,
approx. 180 g/m²



White

Coloured



110 Night blue
21 White



BP® Unisex sweat jacket 1627

Long sleeves, high collar, zip, reinforced shoulders, kangaroo pockets, knitted cuffs and hem, length 70 cm

Order no. **1627 193 21** White
Order no. **1627 193 110** Night blue

Sizes XS-3XL

55% cotton/45% polyester,
approx. 320 g/m²



White

Coloured



✓ based on hygiene requirements in accordance with DIN 10524
✓ with metal press studs – easy to find with metal detectors

81 Red
82 Claret
74 Mid green
13 Royal blue
110 Night blue
21 White
51 Light grey
53 Dark grey

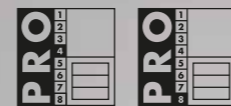
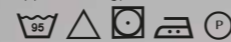


BP® Unisex polo shirt 1625

1/2 sleeves, polo collar with concealed press-stud band, reinforced shoulders, length 70 cm

Order no. **1625 181 13** Royal blue (sizes XS-6XL)
Order no. **1625 181 21** White (sizes XXS-6XL)
Order no. **1625 181 51** Light grey (sizes XXS-6XL)
Order no. **1625 181 53** Dark grey (sizes XXS-6XL)
Order no. **1625 181 74** Mid green (sizes XS-6XL)
Order no. **1625 181 81** Red (sizes XS-6XL)
Order no. **1625 181 82** Claret (sizes XXS-6XL)
Order no. **1625 181 110** Night blue (sizes XXS-6XL)

50% cotton/50% polyester,
approx. 220 g/m²



White

Coloured

SUITABLE FOR INDUSTRIAL LAUNDERING AS PER ISO 15797

✓ based on hygiene requirements in accordance with DIN 10524

BP.
feel the difference

BP T-SHIRTS

BP® Unisex sweatshirt 1623

Long sleeves, round neck, reinforced shoulders, knitted cuffs and hem, length 70 cm

Order no. **1623 193 13** Royal blue (sizes XS-3XL)
Order no. **1623 193 21** White (sizes XS-4XL)
Order no. **1623 193 32** Black (sizes XS-3XL)
Order no. **1623 193 51** Light grey (sizes XS-3XL)
Order no. **1623 193 53** Dark grey (sizes XS-3XL)
Order no. **1623 193 74** Mid green (sizes S-3XL)
Order no. **1623 193 81** Red (sizes XS-3XL)
Order no. **1623 193 82** Claret (sizes XS-3XL)
Order no. **1623 193 110** Night blue (sizes XS-3XL)

55% cotton/45% polyester,
approx. 320 g/m²



White

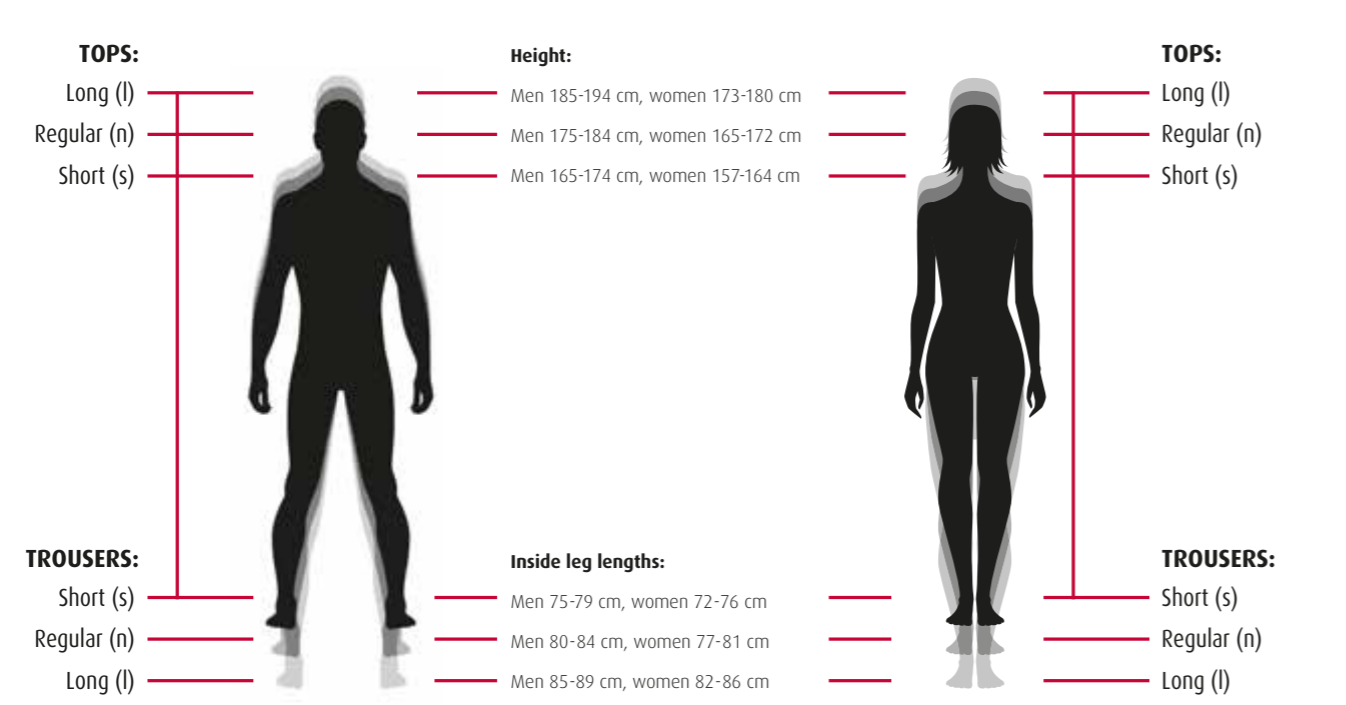
Coloured



82 Claret
81 Red
74 Mid green
13 Royal blue
110 Night blue
21 White
51 Light grey
53 Dark grey
32 Black

The right size for everyone.

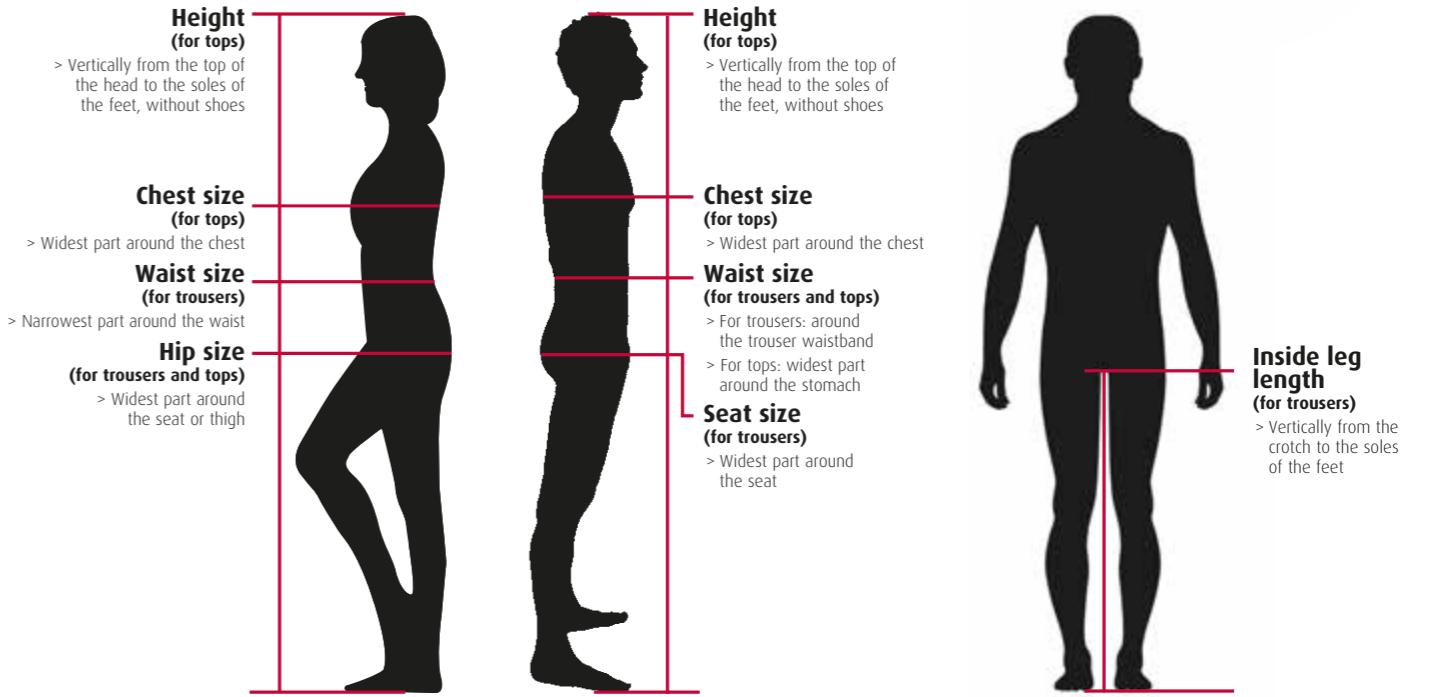
Lots of BP products are available in three lengths.
Note the following code for your size: s (short), n (regular) or l (long).



All items in the BP Industrial Food® collection are unisex sizes.

German sizes

<



Measure your height vertically from the top of the head to the soles of the feet, without shoes.
> In the following table, you will find your height in the top lines of the three unisex tables.

For tops, also measure your chest size and the seat or hip size.
> Match these values with your height.

For trousers, measure your waistband or waist size, your hip or seat size and your inside leg length.

You have now calculated your size. Look vertically down the column (see example in yellow) to determine your BP size.

UNISEX SIZES IN THREE LENGTHS

International sizes

International sizes SHORT height 160-169	Height	160-169	160-169	160-169	160-169	160-169	160-169	160-169	160-169	160-169	160-169
	Chest size	74-77	78-85	86-93	94-101	102-109	110-119	120-129	130-139	140-149	150-159
	Waist size	62-65	70-73	78-81	86-89	100-104	110-114	120-124	130-134	140-144	150-154
	Seat size	81-84	85-92	93-100	101-107	108-115	116-125	126-135	136-145	146-155	156-165
	Inside leg length	73-78	73-78	73-78	73-78	73-78	73-78	73-78	73-78	73-78	73-78
International sizes REGULAR height 170-179	Height	170-179	170-179	170-179	170-179	170-179	170-179	170-179	170-179	170-179	170-179
	Chest size	74-77	78-85	86-93	94-101	102-109	110-119	120-129	130-139	140-149	150-159
	Waist size	62-65	70-73	78-81	86-89	100-104	110-114	120-124	130-134	140-144	150-154
	Seat size	81-84	85-92	93-100	101-107	108-115	116-125	126-135	136-145	146-155	156-165
	Inside leg length	79-83	79-83	79-83	79-83	79-83	79-83	79-83	79-83	79-83	79-83
International sizes LONG height 180-189	Height	160-169	160-169	160-169	160-169	160-169	160-169	160-169	160-169	160-169	160-169
	Chest size	74-77	78-85	86-93	94-101	102-109	110-119	120-129	130-139	140-149	150-159
	Waist size	62-65	70-73	78-81	86-89	100-104	110-114	120-124	130-134	140-144	150-154
	Seat size	81-84	85-92	93-100	101-107	108-115	116-125	126-135	136-145	146-155	156-165
	Inside leg length	84-88	84-88	84-88	84-88	84-88	84-88	84-88	84-88	84-88	84-88



Example

All sizes stated on this double page are body measurements in cm.
Only prewashed clothing should be used to measure sizes.
BP assumes no liability in the event of complaints arising from inadequate washing tests and incorrect size measurement.



Example

Product finder

You'll also find all information about BP items in our online shop at www.bp-online.com

				PRO label	Page
1080	001	21	BP® Belt, pack of 3	-	23
1618	171	21	BP® Unisex T-shirt		42 44
1620	171	21	BP® Long-sleeve unisex T-shirt		42 46
1620	171	51	BP® Long-sleeve unisex T-shirt		42 46
1620	171	110	BP® Long-sleeve unisex T-shirt		82 46
1621	171	13	BP® Unisex T-shirt		82 45
1621	171	21	BP® Unisex T-shirt		42 45
1621	171	32	BP® Unisex T-shirt		82 45
1621	171	51	BP® Unisex T-shirt		82 45
1621	171	53	BP® Unisex T-shirt		82 45
1621	171	56	BP® Unisex T-shirt		82 45
1621	171	74	BP® Unisex T-shirt		82 45
1621	171	81	BP® Unisex T-shirt		82 45
1621	171	82	BP® Unisex T-shirt		82 45
1621	171	85	BP® Unisex T-shirt		82 45
1621	171	110	BP® Unisex T-shirt		82 45
1623	193	13	BP® Unisex sweatshirt		81 47
1623	193	21	BP® Unisex sweatshirt		41 47
1623	193	32	BP® Unisex sweatshirt		81 47
1623	193	51	BP® Unisex sweatshirt		81 47
1623	193	53	BP® Unisex sweatshirt		81 47
1623	193	74	BP® Unisex sweatshirt		81 47
1623	193	81	BP® Unisex sweatshirt		81 47
1623	193	82	BP® Unisex sweatshirt		81 47
1623	193	110	BP® Unisex sweatshirt		81 47
1625	181	13	BP® Unisex polo shirt		82 46
1625	181	21	BP® Unisex polo shirt		42 46
1625	181	51	BP® Unisex polo shirt		82 46
1625	181	53	BP® Unisex polo shirt		82 46
1625	181	74	BP® Unisex polo shirt		82 46
1625	181	81	BP® Unisex polo shirt		82 46
1625	181	82	BP® Unisex polo shirt		82 46
1625	181	110	BP® Unisex polo shirt		82 46
1627	193	21	BP® Unisex sweat jacket		61 46
1627	193	110	BP® Unisex sweat jacket		81 46
1628	181	21	BP® Long-sleeve unisex polo shirt		42 44
1670	500	11	BP® Unisex jacket		83 29
1670	500	21	BP® Unisex jacket		43 21
1670	500	51	BP® Unisex jacket		83 30
1670	500	74	BP® Unisex jacket		83 39
1672	558	11	BP® Unisex trousers		83 28
1672	558	21	BP® Unisex trousers		43 23
1672	558	51	BP® Unisex trousers		83 31
1673	500	11	BP® Unisex coat		83 29
1673	500	13	BP® Unisex coat		83 42
1673	500	21	BP® Unisex coat		43 25
1673	500	51	BP® Unisex coat		83 33
1673	500	53	BP® Unisex coat		83 35
1673	500	74	BP® Unisex coat		83 40
1675	558	21	BP® Unisex bib & brace		83 24
1675	558	51	BP® Unisex bib & brace		83 32
1676	558	21	BP® Unisex coverall		43 25
1676	558	51	BP® Unisex coverall		83 33
1680	558	13	BP® Unisex work trousers		83 43
1680	558	21	BP® Unisex work trousers		43 23
1680	558	51	BP® Unisex work trousers		83 31
1680	558	53	BP® Unisex work trousers		83 37
1680	558	74	BP® Unisex work trousers		83 41
1681	558	13	BP® Unisex work bib & brace		83 43
1681	558	21	BP® Unisex work bib & brace		83 24

				PRO label	Page
1681	558	51	BP® Unisex work bib & brace		83 32
1681	558	53	BP® Unisex work bib & brace		83 37
1681	558	74	BP® Unisex work bib & brace		83 41
1682	558	13	BP® Unisex work jacket		83 42
1682	558	21	BP® Unisex work jacket		43 21
1682	558	51	BP® Unisex work jacket		83 30
1682	558	53	BP® Unisex work jacket		83 35
1682	558	74	BP® Unisex work jacket		83 39
1683	665	21	BP® Unisex quilted waistcoat		42 27
1684	665	21	BP® Unisex quilted jacket		42 27
1685	665	21	BP® Unisex quilted trousers		42 26

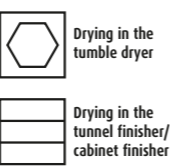
BP quality. Even after many washes.

PRO label (example)



- washed with programme no. 8 as specified in ISO 15797
- then dried in the tumble dryer or tunnel finisher and tested

Drying symbols



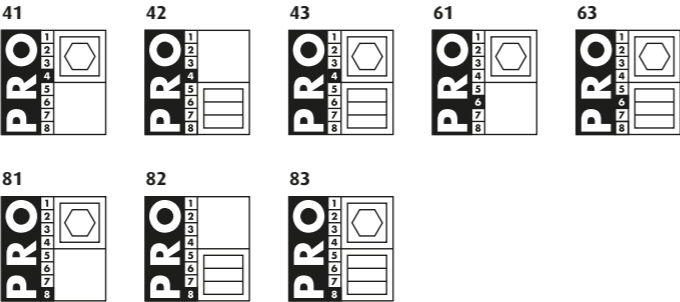
Washing symbols

- | | | |
|---|---|---|
| 1 | 2 | White work clothing and/or coloured trim, peracetic acid bleach |
| 2 | 3 | White work clothing, chlorine bleach |
| 3 | 4 | White work clothing and/or coloured trim, hydrogen peroxide |
| 4 | 5 | White work clothing and/or coloured trim, hydrogen peroxide |
| 5 | 6 | White work clothing and/or coloured trim, hydrogen peroxide |
| 6 | 7 | White work clothing and/or coloured trim, hydrogen peroxide |
| 7 | 8 | Coloured work clothing |
| 8 | | Coloured work clothing |

> PRO label

The majority of BP products feature the PRO label. The PRO label indicates that the respective product meets the requirements of ISO 30023: it has been tested for suitability for industrial laundering in accordance with ISO 15797, namely with washing programmes (1-8), in the tunnel finisher and/or tumble dryer. However, the PRO label does not issue any specific care instructions. Practical washing tests must be carried out before industrial laundering of the product. For further details, please see the sewn-in label and the manufacturer's information.

The items in our Industrial Food collection feature the following PRO labels:



Looking good in any situation.

You can also search our other collections to find the perfect complement to your Industrial Food clothing!





This catalogue was printed on 100% recycled paper.

www.bp-online.com