

BP® LIGHTWEIGHT WOMEN'S SLIP-ON TUNIC

Art.-Nr.: 1708-241-0188



SPECIAL FEATURES

- modern V-neck with stretch
- with flexible stretch inserts
- super light stretch fabric
- Modern Fit

FABRIC

- **Outer fabric 1** 49% Cotton, 48% Polyester, 3% Elastolefin
- **Fabric weight** 150 g/m²

FUTHER DETAILS

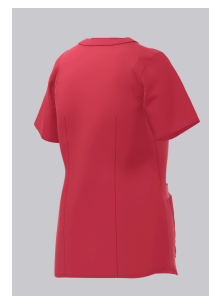
- Super lightweight stretch fabric for optimum wear comfort, 1/2 sleeve with coloured stretch insert, V-neck with coloured stretch insert, 2 large side pockets with coloured stretch inserts, one pocket with smartphone pocket and one with key loop, dividing seams for a slim silhouette

COLOR

coral

SIZE CHART

- XSn-3XLn



WASHING INSTRUCTIONS

- 🧺 95°C Boiling wash (normal process)
- △ Bleaching allowed
- 🌀 Mild drying process
- 🧊 Iron at moderate temperature
- Ⓟ Professional dry cleaning



Suitable for industrial laundering - ISO 15797