



SPECIAL FEATURES

- Arm-lift system for greater freedom of movement
- Discreet V-neck with press studs
- Soft, lightweight fabric for maximum wear comfort
- Slim fit

FABRIC

- **Outer fabric 1** 50% Cotton, 50% Polyester
- **Fabric weight** 180 g/m²

FUTHER DETAILS

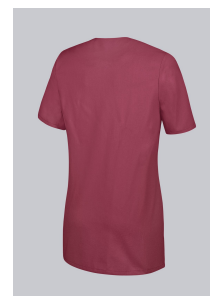
1/2 sleeve, V-neck with narrow press-stud band, arm-lift system for greater freedom of movement, 2 large side pockets, 1 with pager pocket, loop for name tag

COLOR

blackberry

SIZE CHART

XS-3XL



WASHING INSTRUCTIONS

- 👑 95°C Boiling wash (normal process)
- △ Bleaching allowed
- 🕒 Mild drying process
- 📄 Iron at moderate temperature
- Ⓟ Professional dry cleaning



Suitable for industrial laundering - ISO 15797